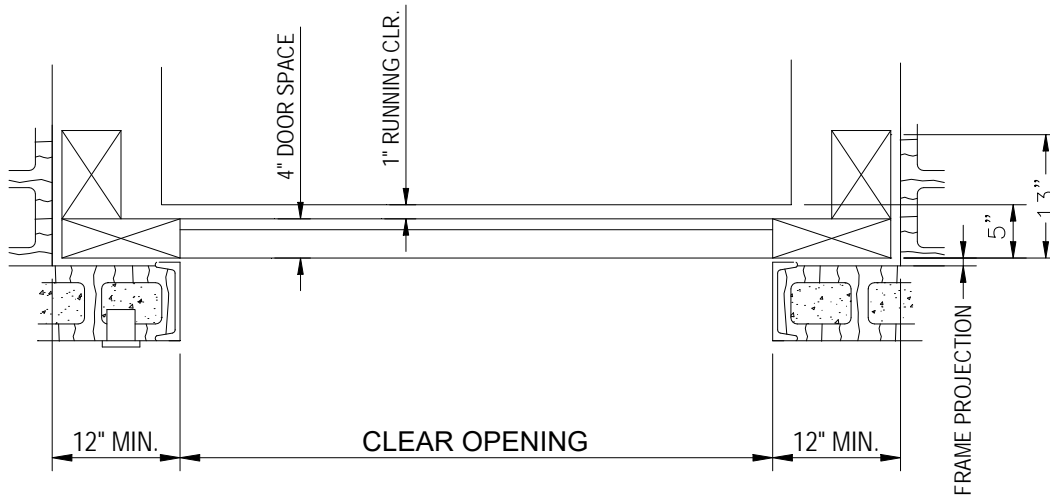


# REGULAR BI-PARTING DOOR

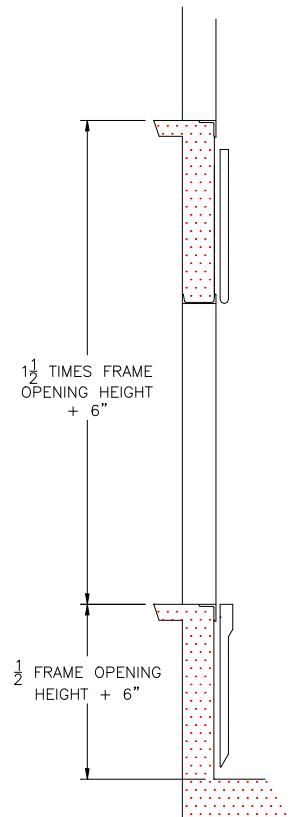
## Model: **DP-R**

- MOST ECONOMICAL DOOR CONFIGURATIONS
- FLOOR HEIGHT = 1-1/2 TIMES OPENING HEIGHT + 6"
- PIT DEPTH = 1/2 TIMES OPENING HEIGHT + 6"

Opening Height	7'	8'	9'	10'	11'	12'	13'	14'	15'
Floor Height Required	11'-0"	12'-6"	14'-0"	15'-6"	17'-0"	18'-6"	20'-0"	21'-6"	23'-0"
Min. Pit Depth	4'-0"	4'-6"	5'-0"	5'-6"	6'-0"	6'-6"	7'-0"	7'-6"	8'-0"
Min. Overhead Required for Bi-Parting Door	10'-9"	12'-3"	13'-9"	15'-3"	16'-9"	18'-3"	19'-9"	21'-3"	22'-9"



PLAN VIEW



ELEVATION



5410 N. Euclid  
St. Louis, MO 63115

800-489-4889  
info@emsdoors.com

FORM # ED8505